

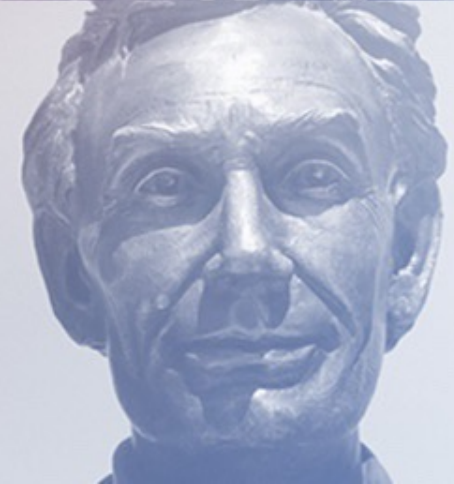


UNIVERSITY
OF ILLINOIS
SYSTEM

MINING POST-SECONDARY EARNINGS DATA FOR MEANING

Chris Lehman

University Office for Planning & Budgeting



College
Scorecard
IL College2Career
PSEO



DESCENDING INTO THE DEEP DARKNESS...

“Deep Darkness” 5-hour cave tour near Louisville, Kentucky

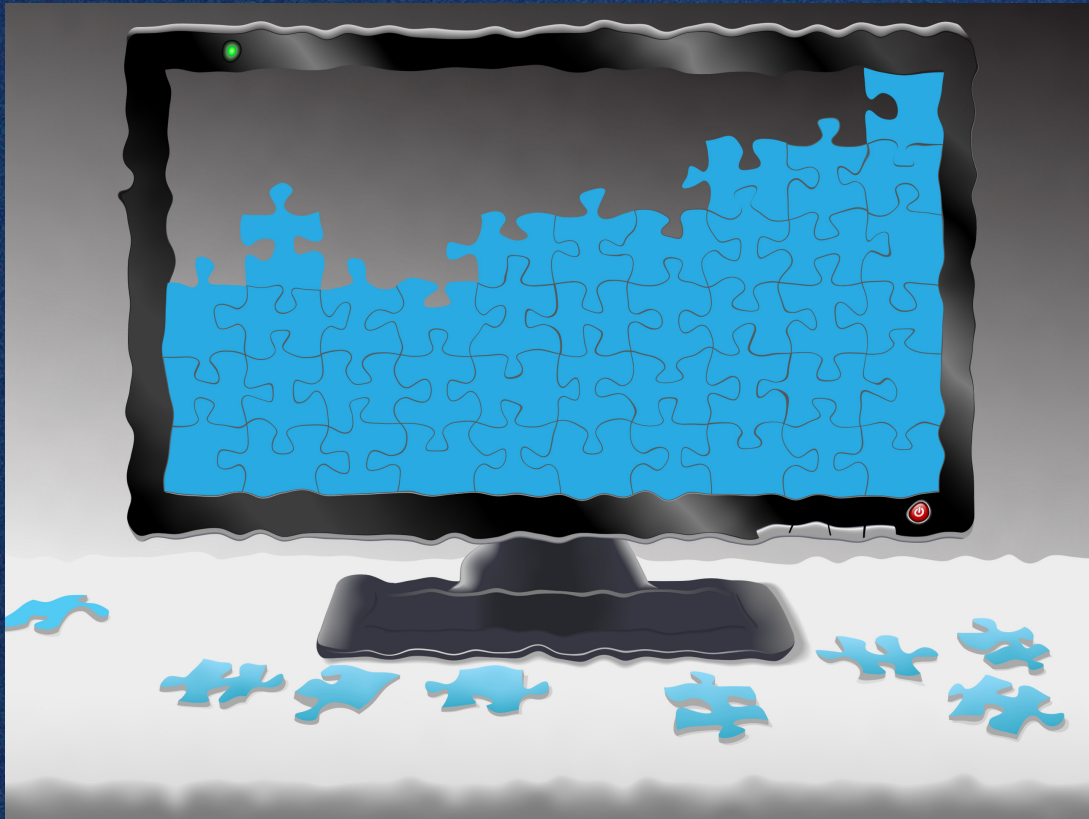
- Descend slippery and steep 93 ft. ladder
- Rappel down a 100 ft. cave “mountain”
- Climb, crawl, splash, and kayak (!) through the cave
- Then the really fun part... going back up!



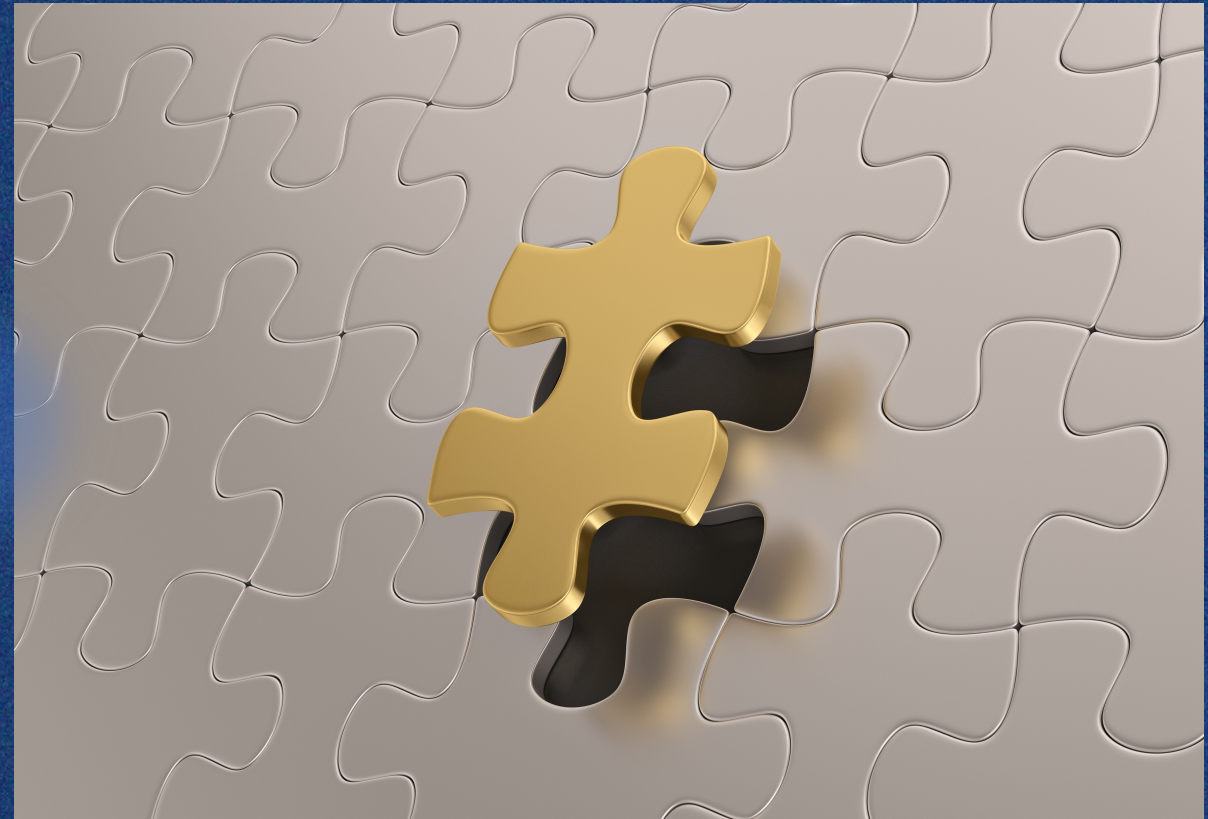
SCOPE OF PRESENTATION

- This is not a 5 hour tour! (or a 3 hour Gilligan's Island tour)
 - Only a 40 minute tour with 10 minutes Q&A 😊
- Looking at post-graduation salary data in the following tools:
 - College Scorecard
 - Illinois College2Career
 - Post-Secondary Employment Outcomes (PSEO)
- Not considering tuition, debt, etc.

OUTCOMES DATA EVOLUTION



Survey-based data



Tax-based data

USE CASE

Compare earnings data for Illinois 4-Year Publics



BENCHMARKING IS FULL OF PITFALLS...

- Cost-of-living (COL) is NOT factored into data sets
 - Would have to be adjusted for each person for each program
 - Example: Computer Science grads
 - Student A moves to San Francisco making \$100k per year
 - Student B stays in Central Illinois making \$75k per year
- Location matters
 - Schools in Texas (oil money) and West Coast (tech) do well overall
- Major-to-CIP mappings differ across institutions
 - Ex: Indiana University business degrees are all "Business General"

COLLEGE SCORECARD

- Launched in 2015
 - Updated multiple times per year as new IPEDS/IRS/NSLDS data released
 - Added post-bacc certificates, masters, and doctoral degrees in April
- IPEDS Completion data linked to Dept of Treasury Tax records
 - **Only includes data on students who received federal financial aid**
 - About 70% of total student population
 - Lower at community colleges, higher at for profits
 - Earnings data 1, 3 and 4 years after graduation

COLLEGE SCORECARD

- Web interface: <https://collegescorecard.ed.gov/>
 - Interface is NOT designed for IR work
 - Aimed at high school students and parents
- Data Download link: <https://collegescorecard.ed.gov/data/>
 - Institution-level data: 240MB (3,232 variables!)
 - Field-of-study data: 593MB (160 variables)
 - Data documentation: <https://collegescorecard.ed.gov/data/documentation/>
- API access: <http://api.data.gov/ed/collegescorecard/>
 - Endpoint: /v1/schools
 - API key signup: <https://api.data.gov/signup>

COLLEGE SCORECARD – INSTITUTION-LEVEL DATA

University of Illinois Urbana-Champaign

33,889 undergraduate students

illinois.edu



Year



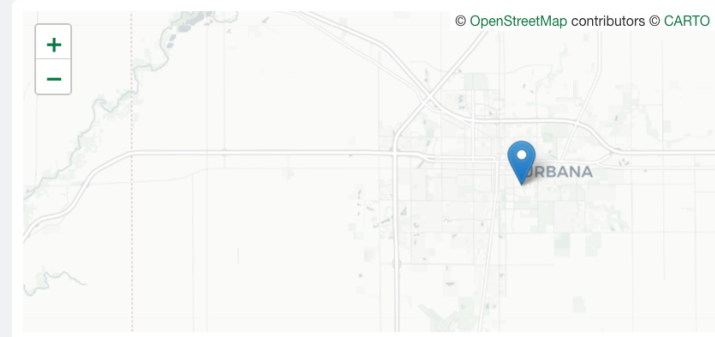
Public



City



Large



Champaign, IL 61820-5711

[View on map](#)

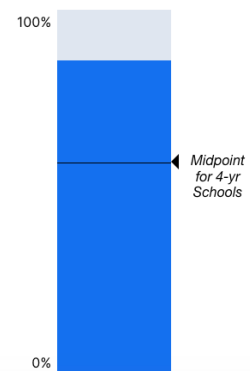
Midpoint for 4-yr Schools

Midpoint for All Schools

Graduation Rate

86%

Midpoint for 4-yr Schools: 58%



Average Annual Cost

\$15,483

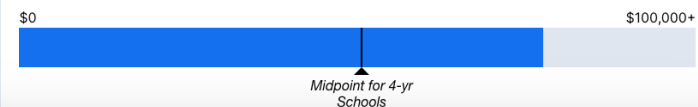
Midpoint for 4-yr Schools: \$18,902



Median Earnings

\$77,368

Midpoint for 4-yr Schools: \$50,482



COLLEGE SCORECARD – USE-CASE FAIL

School: Location: State Hide Filters

More Filters [Close filters](#)

Academic Fields

Degree Types

- Undergraduate
 - Certificate
 - Associate's Degree
 - Bachelor's Degree
- Graduate
 - Master's Degree
 - Post-baccalaureate Certificate
 - Doctoral Degree
 - First Professional Degree
 - Graduate/Professional Certificate

Graduation Rate

Average Annual Cost

Test Scores

Acceptance Rate

Size

Type of School

Urbanicity

12 Results Reset Filters Sort: % Earning More Than... Share

School	Location	Year	Public	City	Large	Graduation Rate	Average Annual Cost	Median Earnings
University of Illinois Urbana-Champaign	CHAMPAIGN, IL	Year	Public	City	Large	86%	\$15k	\$77k
Illinois State University	NORMAL, IL	Year	Public	Suburban	Large	72%	\$21k	\$59k
University of Illinois Chicago	CHICAGO, IL	Year	Public	City	Large	68%	\$11k	\$64k
University of Illinois Springfield	SPRINGFIELD, IL	Year	Public	City	Medium	56%	\$12k	\$53k
Governors State University	UNIVERSITY PARK, IL	Year	Public	Rural	Medium	61%	\$9k	\$53k
Southern Illinois University-Edwardsville	EDWARDSVILLE, IL	Year	Public	Suburban	Medium	55%	\$14k	\$54k
Northern Illinois University	DEKALB, IL	Year	Public	Suburban	Medium	59%	\$14k	\$55k
Western Illinois University	MACOMB, IL	Year	Public	Town	Medium	58%	\$11k	\$55k
Eastern Illinois University	CHARLESTON, IL	Year	Public	Town	Medium	58%	\$11k	\$55k
Southern Illinois University-Carbondale	CARBONDALE, IL	Year	Public	City	Medium	55%	\$11k	\$55k
Northeastern Illinois University	CHICAGO, IL	Year	Public	City	Medium	47%	\$14k	\$55k
Chicago State University	CHICAGO, IL	Year	Public	City	Small	34%	\$9k	\$44k

Ready to Compare: ! Maximum of 10 Schools reached 0 Fields of Study

RAPPELLING DOWN "THE MOUNTAIN" (OF DATA)



AutoSave OFF

Most-Recent-Cohorts-Institution

Home Insert Draw Page Layout Formulas Data Review View Automate Acrobat Tell me

Comments

Calibri (Body) 12

General

Conditional Formatting Format as Table Cell Styles

Insert Delete Format

Sort & Filter Find & Select

Sensitivity Analyze Data Create PDF and share link

Possible Data Loss Some features might be lost if you save this workbook in the comma-delimited (.csv) format. To preserve these features, save it in an Excel file format.

A1	UNITID	OPEID	OPEID6	INSTNM	CITY	STABBR	ZIP	ACCREDITAGE	INSTURL	NPCURL	SCH_DEG	HCM2	MAIN	NUMBRANC	PREDDEG	HIGHDEG	CONTROL	ST_FIPS	REGION	LOCALE	LOCALE2	LATITUDE	LONGITUDE
1	100654	100200	1002	Alabama A & Normal	AL		35762	Southern Ass	www.aamu.	www.aamu.	3	0	1	1	3	4	1	1	5	12	NULL	34.783368	-
2	100663	105200	1052	University of Birmingham	AL		35294-0110	Southern Ass	https://www	https://tcc.r	3	0	1	1	3	4	1	1	5	12	NULL	33.505697	-
3	100690	2503400	25034	Amridge Uni Montgomery	AL		36117-3553	Southern Ass	https://www	https://www	3	0	1	1	3	4	2	1	5	12	NULL	32.362609	-
4	100706	105500	1055	University of Huntsville	AL		35899	Southern Ass	www.uah.ed	finaid.uah.ec	3	0	1	1	3	4	1	1	5	12	NULL	34.724557	-
5	100724	100500	1005	Alabama Sta Montgomery	AL		36104-0271	Southern Ass	www.alasu.e	www.alasu.e	3	0	1	1	3	4	1	1	5	12	NULL	32.364317	-
6	100751	105100	1051	The Universi	Tuscaloosa	AL	35487-0100	Southern Ass	www.ua.edu	financialaid.i	3	0	1	1	3	4	1	1	5	13	NULL	33.211875	-
7	100760	100700	1007	Central Alab: Alexander Ci	AL		35010	Southern Ass	www.cacc.e	https://www	2	0	1	1	2	2	1	1	5	32	NULL	32.92478	-
8	100812	100800	1008	Athens State Athens	AL		35611	Southern Ass	www.athens	www.athens	3	0	1	1	3	4	1	1	5	31	NULL	34.806793	-
9	100830	831000	8310	Auburn Univ Montgomery	AL		36117-3596	Southern Ass	www.aum.e	www.aum.e	3	0	1	1	3	4	1	1	5	12	NULL	32.36736	-
10	100858	1																				32.599378	-
11	100937	1																				33.513774	-
12	101028	12																				32.42391	-
13	101116	13																				32.342684	-
14	101143	1																				31.297496	-
15	101161	1																				30.851343	-
16	101189	1																				32.384181	-
17	101240	1																				33.994001	-
18	101277	41																				34.27871	-
19	101286	1																				31.315274	-
20	101295	7																				34.072439	-
21	101301	5																				32.445917	-
22	101365	9																				33.468466	-
23	101435	1																				32.351034	-
24	101453	2199/00	2199/	Heritage Chr Florence	AL		35630-99/	Association 1	www.ncu.ed	www.ncu.ed	3	0	1	1	3	4	2	1	5	13	NULL	34.856153	-
25	101462	526000	5260	J. F. Drake St Huntsville	AL		35811	Southern Ass	https://www	https://www	1	0	1	1	1	2	1	1	5	12	NULL	34.771858	-
26	101471	3002500	30025	J F Ingram St Deatsville	AL		36022	Council on O	www.istc.ed	istc.edu/Net	1	1	1	1	1	1	1	1	5	21	NULL	32.582312	-
27	101480	102000	1020	Jacksonville Jacksonville	AL		36265	Southern Ass	www.jsu.ed	www.jsu.ed	3	0	1	1	3	4	1	1	5	23	NULL	33.822938	-
28	101505	102200	1022	Jefferson Sta Birmingham	AL		35215-3098	Southern Ass	www.jeffers	www.jeffers	2	0	1	1	2	2	1	1	5	12	NULL	33.652535	-
29	101514	101300	1013	John C Calho Tanner	AL		35671	Southern Ass	https://calhc	https://calhc	2	0	1	1	1	2	1	1	5	41	NULL	34.645844	-
30	101569	105900	1059	Lawson Stat Birmingham	AL		35221-1717	Southern Ass	www.lawsor	www.lawsor	1	0	1	1	2	2	1	1	5	12	NULL	33.450814	-
31	101587	102400	1024	University of Livingston	AL		35470	Southern Ass	www.uwa.e	secure.uwa.e	3	0	1	1	3	4	1	1	5	43	NULL	32.588132	-
32	101602	898800	8988	Lurleen B W; Andalusia	AL		36420-1224	Southern Ass	https://www	https://www	2	0	1	1	2	2	1	1	5	41	NULL	31.322947	-
33	101648	102600	1026	Marion Milit Marion	AL		36756-3207	Southern Ass	www.marior	marionmilita	2	0	1	1	2	2	1	1	5	43	NULL	32.623734	-
34	101675	102800	1028	Miles Colleg Fairfield	AL		35064-2621	Southern Ass	www.miles.	https://mile	3	0	1	1	3	3	2	1	5	21	NULL	33.482442	-
35	101693	102900	1029	University of Mobile	AL		36613-2842	Southern Ass	www.umobi	umobile.edu	3	0	1	1	3	4	2	1	5	41	NULL	30.793247	-
36	101709	100400	1004	University of Montevallo	AL		35115-6000	Southern Ass	www.monte	https://www	3	0	1	1	3	4	1	1	5	21	NULL	33.10625	-

3,232 Variables in Institution-level data

Most are Repayment and Completion related

Only 122 are Earnings related

Median Earnings

The median annual earnings of individuals that received federal student aid and began college at this institution 10 years ago, regardless of their completion status.

[More Information](#)

Median Earnings

Median earnings are calculated for individuals that were federally aided, were working, and were not enrolled in school as of the measurement point. Earnings were measured based on wages and deferred compensation reported via IRS form W-2 plus positive self-employment earnings reported via Schedule SE. Individuals with \$1 or more of earnings were considered to be working and were included in the median earnings calculation. Anyone with an in-school deferment for at least 30 days during the measurement year were considered enrolled in school and were excluded from the median earnings calculation. Individuals that died were also excluded from the earnings cohort.

These calculations are based, in part, on calendar year 2020 earnings which may have been impacted by the pandemic and may not be predictive of earnings values in non-pandemic years.

Relevant variables:

MD_EARN_WNE_P10 2008-09 and 2009-10 pooled award year cohort measured in calendar year 2019 and 2020. Earnings are inflation adjusted to 2021 dollars.

COLLEGE SCORECARD MEDIAN EARNINGS

Illinois 4-Year Publics

	A	B	C	D	BJU	BJV	BJW	BJX	BJY	BJZ	BKA	BKB
1	UNITID	OPEID	OPEID6	INSTNM	FSEND_2	FSEND_3	FSEND_4	FSEND_5	COUNT_N	COUNT_V	MN_EAR	MD_EARN_WNE_P10
861	145637	177500	1775	University of Illinois Urbana-Champaign	NULL	NULL	NULL	NULL	590	7419	70900	77368
879	145600	177600	1776	University of Illinois Chicago	NULL	NULL	NULL	NULL	619	5493	61300	64108
887	145813	169200	1692	Illinois State University	NULL	NULL	NULL	NULL	383	6284	51600	58781
896	147703	173700	1737	Northern Illinois University	NULL	NULL	NULL	NULL	586	6828	49800	55380
899	149231	175900	1759	Southern Illinois University-Edwardsville	NULL	NULL	NULL	NULL	258	3855	50800	54293
905	148654	933300	9333	University of Illinois Springfield	NULL	NULL	NULL	NULL	111	1131	49900	52925
950	145336	914500	9145	Governors State University	NULL	NULL	NULL	NULL	122	994	44000	52665
952	149772	178000	1780	Western Illinois University	NULL	NULL	NULL	NULL	314	4291	47500	52612
972	144892	167400	1674	Eastern Illinois University	NULL	NULL	NULL	NULL	275	3720	46000	50741
983	149222	175800	1758	Southern Illinois University-Carbondale	NULL	NULL	NULL	NULL	569	6039	49500	50562
984	147776	169300	1693	Northeastern Illinois University	NULL	NULL	NULL	NULL	385	2577	41900	50312
996	144005	169400	1694	Chicago State University	NULL	NULL	NULL	NULL	242	1948	38200	43759

COLLEGE SCORECARD VS. U.S. NEWS & WORLD REPORT

% Earning More than High School Grad at UIUC

College Scorecard

Percentage Earning More Than a High School Graduate ⓘ

84% of students

Share of students earning more than HS grad 6 years after entry

GT_THRESHOLD_P6 (already calculated out as %)

U.S. News

Outcomes (52%)

College grads earning more than a HS grad (5%)

87%

of grads earned more than HS grad 4 years after completing
total # of grads 4 years after completing

(GT_THRESHOLD_4YR / COUNT_WNE_4YR)

Since College Scorecard metric uses 6 years after entry and U.S. News uses 4 years after graduating, U.S. News Metric should be slightly higher (which it is)

% EARNING MORE THAN HIGH SCHOOL GRAD

Illinois Publics

College Scorecard

6 Years After Entry*

U.S. News

4 Years After Graduation

INSTNM	GT_THRESHOLD_P6
University of Illinois Urbana-Champaign	83.8%
Illinois State University	79.4%
University of Illinois Chicago	75.6%
University of Illinois Springfield	74.0%
Governors State University	72.7%
Southern Illinois University-Edwardsville	71.4%
Northern Illinois University	70.5%
Western Illinois University	68.6%
Eastern Illinois University	68.5%
Southern Illinois University-Carbondale	66.1%
Northeastern Illinois University	64.6%
Chicago State University	54.8%

INSTNM	U.S. News Calc
University of Illinois Urbana-Champaign	87.2%
University of Illinois Springfield	84.6%
Illinois State University	84.4%
University of Illinois Chicago	83.1%
Southern Illinois University-Edwardsville	82.9%
Northern Illinois University	81.5%
Western Illinois University	80.0%
Southern Illinois University-Carbondale	78.9%
Northeastern Illinois University	77.6%
Eastern Illinois University	76.9%
Governors State University	76.0%
Chicago State University	71.9%

*May be particularly impacted by pandemic (2020 earnings)



COLLEGE SCORECARD – PROGRAM-LEVEL DATA

Marketing - Bachelor's Degree

Median Earnings

\$78,864



Median Total Debt After Graduation

\$20,000



Monthly Earnings

\$6,572

Monthly Loan Payment

\$212

Number of Graduates

127

Include debt borrowed at any prior institutions

Compare

Top Fields of Study at University of Illinois Urbana-Champaign

Out of 97 undergraduate fields of study at University of Illinois Urbana-Champaign, the 5 largest are shown below. (82 had relevant data on number of graduates.) [See All Fields of Study »](#)

Sort By: **Largest Size** Highest Earnings Lowest Debt

Field of Study	Graduates
Research and Experimental Psychology - Bachelor's Degree	542
Economics - Bachelor's Degree	490
Accounting and Related Services - Bachelor's Degree	374
Computer Engineering - Bachelor's Degree	341
Cell/Cellular Biology and Anatomical Sciences - Bachelor's Degree	338

Ready to Compare:



Maximum of 10 Schools reached



1 Field of Study

COLLEGE SCORECARD – PROGRAM-LEVEL DATA

- Level of Detail: 4-digit CIP
 - Data suppressed when fewer than 20 graduates receiving financial aid
 - **ISU**
 - Bachelors: 18 out of 66 (27%) suppressed
 - Masters: 26 out of 36 (72%) suppressed
 - Doctoral/First Professional/Certs: 100% suppressed
 - **UIUC**
 - Bachelors: 32 out of 97 (33%) suppressed
 - Masters: 86 out of 103 (83%) suppressed
 - Doctoral/First Professional/Certs: 100% suppressed
 - **Parkland**
 - Associates: 40 out of 51 (78%) suppressed

% WORKING IN ILLINOIS DEFINITION

Percentage of grads working and not enrolled 4 years after completing who are employed in Illinois

$EARN_COUNT_WNE_4YR / EARN_IN_STATE_4YR$

Exclude all PrivacySuppressed records

Data Dictionary:

<https://collegescorecard.ed.gov/assets/CollegeScorecardDataDictionary.xlsx>

% WORKING IN ILLINOIS FOR ILLINOIS 4YR PUBLICS

UNITID	INSTNM	CIPCODE	CIPDESC	CREDESC	IPEDSCOUNT2	pct_in_state
145600	University of Illinois Chicago	5107	Health and Medical Administrative Services.	Master's Degree	88	27.5%
145637	University of Illinois Urbana-Champaign	1402	Aerospace, Aeronautical and Astronautical Engineering.	Bachelor's Degree	95	28.6%
149772	Western Illinois University	3105	Health and Physical Education/Fitness.	Master's Degree	48	29.3%
149772	Western Illinois University	1311	Student Counseling and Personnel Services.	Master's Degree	44	31.6%
149222	Southern Illinois University-Carbondale	4901	Air Transportation.	Bachelor's Degree	141	32.2%
145637	University of Illinois Urbana-Champaign	5210	Human Resources Management and Services.	Master's Degree	138	33.3%
145600	University of Illinois Chicago	5112	Medicine.	First Professional Degree	315	35.8%
148654	University of Illinois Springfield	1107	Computer Science.	Master's Degree	135	36.1%
149222	Southern Illinois University-Carbondale	1313	Teacher Education and Professional Development, Specific Subject	Bachelor's Degree	173	36.1%
149222	Southern Illinois University-Carbondale	5112	Medicine.	First Professional Degree	68	37.2%
149231	Southern Illinois University-Edwardsville	3105	Health and Physical Education/Fitness.	Master's Degree	65	39.3%
148654	University of Illinois Springfield	1107	Computer Science.	Bachelor's Degree	93	41.9%
149222	Southern Illinois University-Carbondale	5123	Rehabilitation and Therapeutic Professions.	Master's Degree	39	43.5%
145637	University of Illinois Urbana-Champaign	1410	Electrical, Electronics and Communications Engineering.	Bachelor's Degree	221	45.0%
144892	Eastern Illinois University	3105	Health and Physical Education/Fitness.	Master's Degree	38	45.7%
145637	University of Illinois Urbana-Champaign	1409	Computer Engineering.	Bachelor's Degree	341	45.9%
149222	Southern Illinois University-Carbondale	1508	Mechanical Engineering Related Technologies/Technicians.	Bachelor's Degree	112	45.9%
149222	Southern Illinois University-Carbondale	5006	Film/Video and Photographic Arts.	Bachelor's Degree	38	46.7%
145637	University of Illinois Urbana-Champaign	1107	Computer Science.	Bachelor's Degree	291	47.0%
145637	University of Illinois Urbana-Champaign	2501	Library Science and Administration.	Master's Degree		47.8%
145637	University of Illinois Urbana-Champaign	180	Veterinary Medicine.	Doctoral Degree		49.7%
149222	Southern Illinois University-Carbondale	5109	Allied Health Diagnostic, Intervention, and Treatment Professions.	Associate's Degree	27	50.0%
149231	Southern Illinois University-Edwardsville	4404	Public Administration.	Master's Degree	29	51.1%
144005	Chicago State University	2401	Liberal Arts and Sciences, General Studies and Humanities.	Bachelor's Degree	36	94.4%
149772	Western Illinois University	5102	Communication Disorders Sciences and Services.	Master's Degree	16	51.2%
144005	Chicago State University	5120	Pharmacy, Pharmaceutical Sciences, and Administration.	First Professional Degree	59	48.4%
145813	Illinois State University	3105	Health and Physical Education/Fitness.	Master's Degree	78	51.9%
149222	Southern Illinois University-Carbondale	5202	Business Administration, Management and Operations.	Master's Degree	43	52.2%
149222	Southern Illinois University-Carbondale	2607	Zoology/Animal Biology.	Bachelor's Degree	41	52.3%
145600	University of Illinois Chicago	2202	Legal Research and Advanced Professional Studies.	Master's Degree	0	52.5%
145637	University of Illinois Urbana-Champaign	501	Area Studies.	Bachelor's Degree	18	52.7%
149231	Southern Illinois University-Edwardsville	1107	Computer Science.	Bachelor's Degree	76	52.7%

% DIFFERENCE IN PELL EARNINGS DEFINITION

- No race/ethnicity breakouts in the College Scorecard
 - But there are Pell/No Pell breakouts (not a proxy, but still worth looking at)
- % Difference in Earnings (Pell vs. No Pell) 4 Years After Graduation
$$\frac{\text{EARN_PELL_WNE_MDN_4YR} - \text{EARN_NOPELL_WNE_MDN_4YR}}{\text{EARN_NOPELL_WNE_MDN_4YR}}$$
- Keep an eye out for low Ns
 - EARN_COUNT_PELL_WNE_4YR
 - EARN_COUNT_NOPELL_WNE_4YR

% DIFFERENCE IN PELL EARNINGS UGRAD ILLINOIS 4 YR PUBLICS

Sorted by programs where Pell grads make MORE than non-Pell grads

UNITID	INSTNM	CIPDESC	Pell Count	Pell Earnings	No Pell Count	No Pell Earnings	Pell Earn % Diff
145813	Illinois State University	Biology, General.	43	53598	44	45446	17.9%
145600	University of Illinois Chicago	Teacher Education and Professional Development, Speci	40	57835	16	49472	16.9%
145637	University of Illinois Urbana-Champaign	Chemistry.	44	66492	45	57438	15.8%
145637	University of Illinois Urbana-Champaign	Health Services/Allied Health/Health Sciences, General.	18	69553	23	61589	12.9%
145336	Governors State University	Psychology, General.	65	44550	17	39667	12.3%
145813	Illinois State University	Economics.	23	63052	25	56552	11.5%
145600	University of Illinois Chicago	English Language and Literature, General.	73	44485	29	40043	11.1%
145637	University of Illinois Urbana-Champaign	English Language and Literature, General.	48	54411	52	49111	10.8%
147703	Northern Illinois University	Computer Science.	69	81989	40	74100	10.6%
147703	Northern Illinois University	Fine and Studio Arts.	72	38565	52	34910	10.5%
147703	Northern Illinois University	Dietetics and Clinical Nutrition Services.	49	49170	40	44576	10.3%
149222	Southern Illinois University-Carbondale	Information Science/Studies.	64	69766	16	63309	10.2%
149231	Southern Illinois University-Edwardsville	Communication Disorders Sciences and Services.	16	54177	20	49589	9.3%
149772	Western Illinois University	Social Work.	40	43421	24	40160	8.1%
145637	University of Illinois Urbana-Champaign	Food Science and Technology.	38	62972	33	58342	7.9%
149772	Western Illinois University	Health and Physical Education/Fitness.	38	52933	24	49351	7.3%
145600	University of Illinois Chicago	Electrical, Electronics and Communications Engineering.	104	87826	24	81928	7.2%
149222	Southern Illinois University-Carbondale	Mechanical Engineering Related Technologies/Technicia	66	70838	44	66238	6.9%
149222	Southern Illinois University-Carbondale	Mechanical Engineering.	31	85278	27	79803	6.9%
145813	Illinois State University	History.	38	46555	38	43741	6.4%
147703	Northern Illinois University	English Language and Literature, General.	49	41826	37	39335	6.3%
145600	University of Illinois Chicago	Sociology.	97	44679	18	42049	6.3%
145813	Illinois State University	English Language and Literature, General.	56	44223	55	41665	6.1%
145600	University of Illinois Chicago	Accounting and Related Services.	167	68782	37	65058	5.7%
145813	Illinois State University	Social Work.	27	45919	24	43814	4.8%
145637	University of Illinois Urbana-Champaign	Mechanical Engineering.	68	89484	74	86205	3.8%

% DIFFERENCE IN PELL EARNINGS UGRAD ILLINOIS 4 YR PUBLICS – ADDITIONAL CONTEXT

- 679 undergraduate programs in filtered dataset
 - Programs where Pell students earned more: 45 (7%)
 - Range: +0.1% to +17.9%
 - Programs where Pell students earned less: 157 (23%)
 - Range: -0.1% to -34.4%
 - Programs that were Privacy Suppressed: 477 (70%)

ILLINOIS COLLEGE2CAREER TOOL

<https://www.ilcollege2career.com/>

Collaboration between IBHE, ICCB, IDES, and ISAC

Data download: none

API access: none

ILLINOIS COLLEGE2CAREER – ACADEMIC MAJOR REPORT

<https://majorreport.ilcollege2career.com/>

Created by request of legislature, only for Illinois 4-year publics

ILLINOIS COLLEGE2CAREER TOOL DETAILS

- Limited to grads employed in Illinois, earnings 3 yrs after grad
- Bachelor's, Associates, and Certificates (not Masters or Doct.)
- Employment exclusions:
 - Unincorporated self-employed, independent contractors, students working for universities under certain cooperative programs, salespersons primarily paid on commission, federal government workers, railroad workers, and agricultural laborers.
- Suppression threshold: fewer than 10 records
- Race/ethnicity/gender data available but limited to IR portal

ILLINOIS COLLEGE2CAREER – USE-CASE

Illinois Search Results (12)					
College Name	● Cost After Aid	● Student Debt	● Earnings Growth in IL	● Earnings in IL	⚙
University of Illinois at Urbana/Champaign	\$14,321	\$19,500	11.4%	\$55,710	
University of Illinois at Chicago	\$13,214	\$17,250	12.0%	\$48,101	
Northern Illinois University	\$13,956	\$22,500	9.3%	\$45,307	
Illinois State University	\$20,830	\$20,000	9.1%	\$44,779	
University of Illinois at Springfield	\$12,034	\$19,184	11.4%	\$41,411	
Governors State University	\$10,436	\$18,750	11.2%	\$41,400	
Northeastern Illinois University	\$14,590	\$15,000	9.7%	\$41,106	
Southern Illinois University - Carbondale	\$16,285	\$21,592	10.8%	\$40,990	
Southern Illinois University - Edwardsville	\$14,462	\$20,935	9.8%	\$40,421	
Western Illinois University	\$15,305	\$25,047	12.2%	\$39,878	
Chicago State University	\$12,681	\$31,000	9.7%	\$38,299	
Eastern Illinois University	\$13,098	\$21,900	11.6%	\$38,221	

ILLINOIS COLLEGE2CAREER – PROGRAM

Area of Study

Business Administration, Management and Op... ▾



Colleges

Multiple ▾

Update Results

[Learn about related jobs](#)

Illinois Search Results (9)

Edit Categories

ries

or all

ategories

for the college

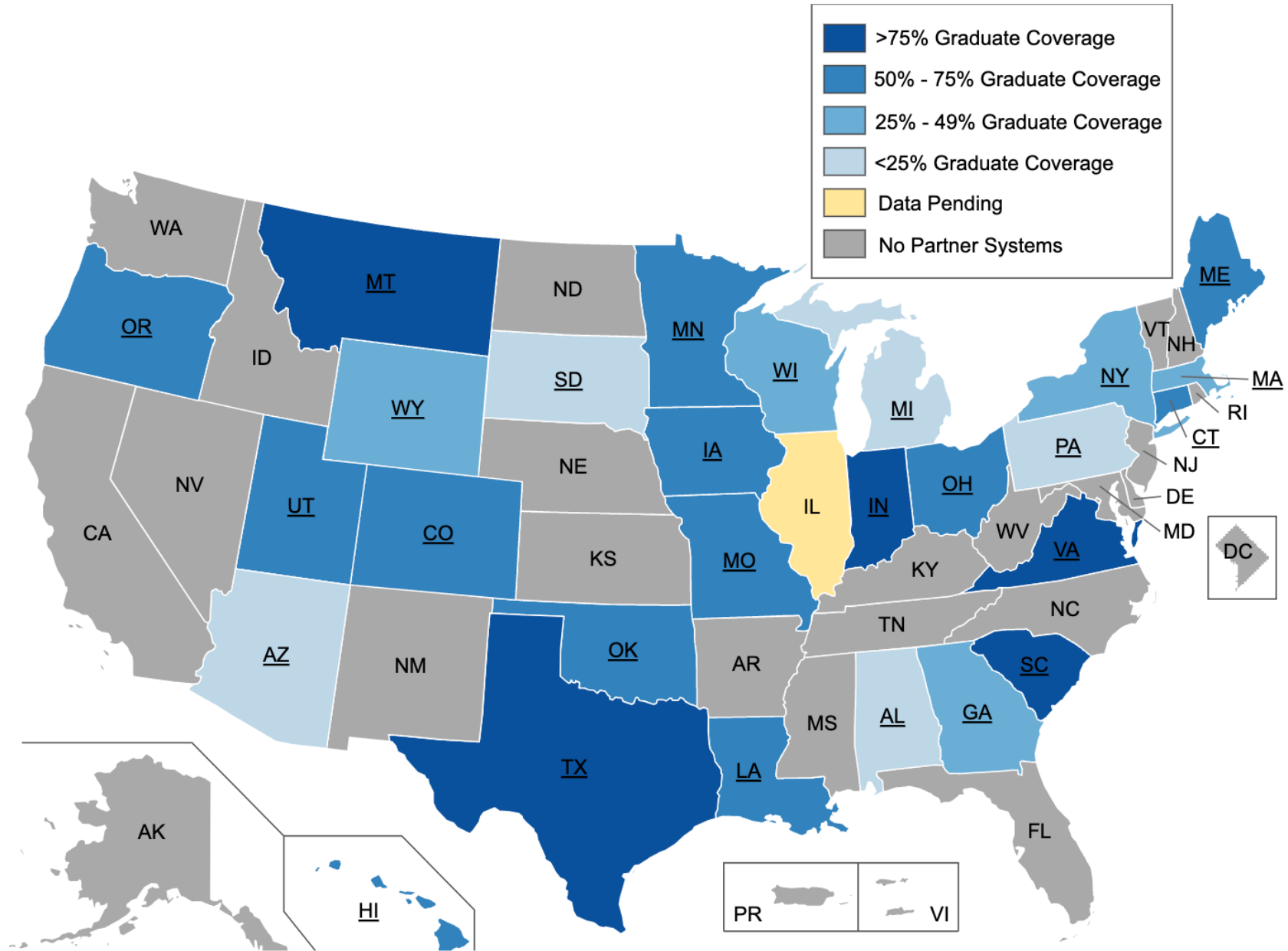
ous

College Name	Earnings in IL
University of Illinois at Urbana/Champaign	\$70,952
University of Illinois at Chicago	\$59,815
Northern Illinois University	\$52,372
Western Illinois University	\$47,775
Illinois State University	\$46,631
University of Illinois at Springfield	\$46,298
Southern Illinois University - Carbondale	\$43,874
Eastern Illinois University	\$43,137
Southern Illinois University - Edwardsville	\$39,358

POST-SECONDARY EMPLOYMENT OUTCOMES (PSEO)

- U.S. Census Bureau project, still considered “experimental”
- Covers roughly 96% of employment (wow!)
 - Exclusions: Graduates with zero earnings for three quarters of calendar year, -Independent contractors, Unincorporated self-employed, other federal employees (postal workers, congress)
- Earnings 1, 5, and 10 years post-grad all deg levels (if available)
- 25th/50th/75th Percentile earnings
- 2-digit (less suppression) and 4-digit CIP Program Detail
- Employment “flows” (industry and geographic, 2-digit CIP only)

PSEO CURRENT COVERAGE MAP



PSEO AND THE STATE OF ILLINOIS

- December Release (R2023Q4) from Census Bureau
 - All Public 4-year schools
 - Most Public 2-year schools
 - Some private colleges/universities (opt-in basis)
 - Data sourced from IHEIS via C2C project with SSNs
 - 1 year post-grad data automatically provided, 5/10 year requires backfill
- Can't show my Illinois 4-year publics use case
 - But hopefully I can in December! 😊

PSEO LINKS

PSEO Explorer: <https://lehd.ces.census.gov/applications/pseo/>

Data download (combined states data):

<https://lehd.ces.census.gov/data/pseo/>

- Earnings data – 34MB (not bad)
- Flows – 1.8GB, 25,182,151 rows (just about broke my computer!!!)

API access:

<https://api.census.gov/data/timeseries/pseo/earnings>

<https://api.census.gov/data/timeseries/pseo/flows>

PSEO EARNINGS 2-DIGIT CIP 1/5/10 YR (IU-BLOOMINGTON)

Data Type

Earnings Flows

State

Indiana ▾

Institution

Indiana University - Bloomington ▾

Degree Level

Baccalaureate ▾

Graduation Cohort

All Cohorts ▾

Compare Earnings by

Time Percent

Earnings-percentile Filter

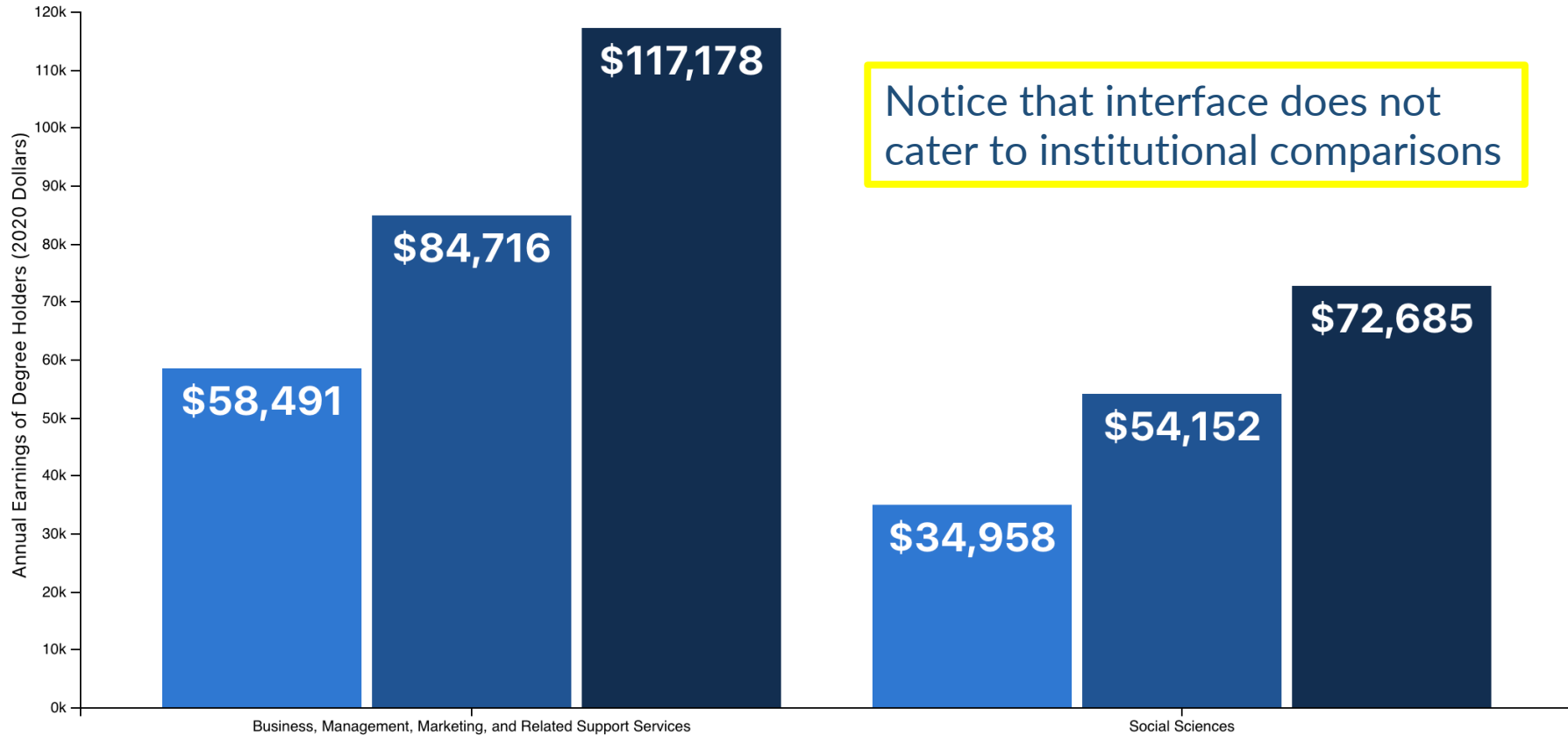
25 50 75

Legend

1 Years Postgrad ■

5 Years Postgrad ■

10 Years Postgrad ■



Program Specificity

General Detailed

Sort Program List by

Size Name

Clear Selected

Filter Degrees...

All Instructional Programs	Business, Management, Marketing, and R...	Education	Communication, Journalism, and Related ...
Parks, Recreation, Leisure, Fitness, and Ki...	Public Administration and Social Service P...	Social Sciences	Biological and Biomedical Sciences
Psychology	Computer and Information Sciences and S...	Visual and Performing Arts	Health Professions and Related Programs
Liberal Arts and Sciences, General Studies...	Family and Consumer Sciences/Human Sc...	Homeland Security, Law Enforcement, Fire...	English Language and Literature/Letters
Foreign Languages, Literatures, and Lingui...	History	Physical Sciences	Multi/Interdisciplinary Studies
Philosophy and Religious Studies	Mathematics and Statistics	Area, Ethnic, Cultural, Gender, and Group ...	Architecture and Related Services

PSEO INDUSTRY AND GEO FLOWS (IU-BLOOMINGTON)

Data Type

Earnings Flows

State

Indiana ▾

Institution

Indiana University - Bloomington ▾

Degree Level

Baccalaureate ▾

Graduation Cohort

All Cohorts ▾

Destination Flows

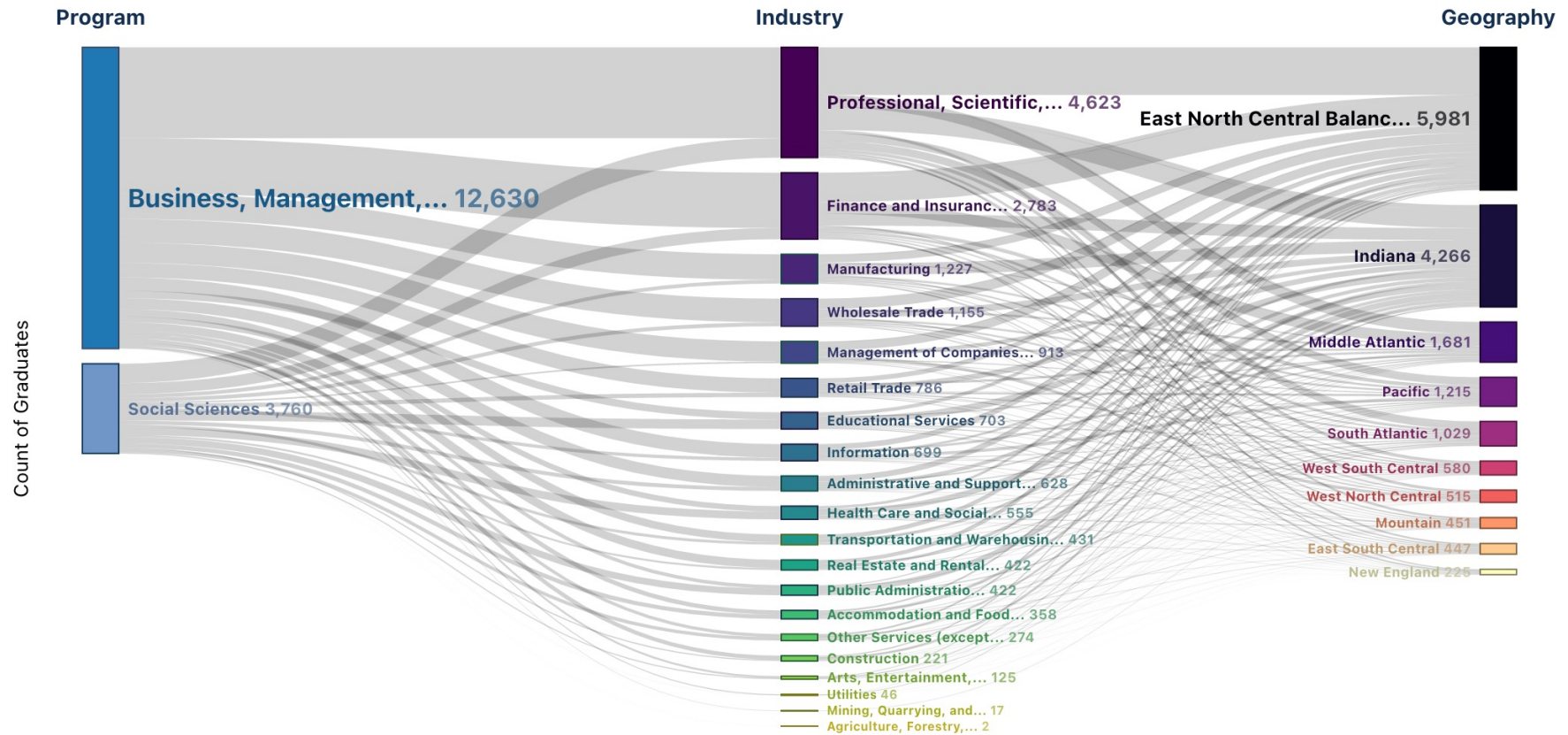
Industry Geo

Years-postgrad Filter

1 5 10

Display

Count Share



Program Specificity

General Detailed

Sort Program List by

Size Name

Clear Selected

Filter Degrees...

All Other Instructional Programs	Business, Management, Marketing, and R...	Education	Communication, Journalism, and Related ...
Parks, Recreation, Leisure, Fitness, and Ki...	Public Administration and Social Service P...	Social Sciences	Biological and Biomedical Sciences
Psychology	Computer and Information Sciences and S...	Visual and Performing Arts	Liberal Arts and Sciences, General Studies...
Health Professions and Related Programs	Family and Consumer Sciences/Human Sc...	Homeland Security, Law Enforcement, Fire...	English Language and Literature/Letters
Foreign Languages, Literatures, and Lingui...	History	Physical Sciences	Multi/Interdisciplinary Studies
Mathematics and Statistics	Philosophy and Religious Studies	Architecture and Related Services	Area, Ethnic, Cultural, Gender, and Group ...
Natural Resources and Conservation	Communications Technologies/Technicians		

PSEO DATA FILES

- Much simpler than College Scorecard dataset
 - Only 36 variables in earnings data
 - One wrinkle: IPEDS IDs are not provided, OPEIDs are used instead
 - A table matching institution names to OPEIDs is included

PSEO INSTITUTION FILE

agg_level_pseo	inst_level	institution	degree_level	cip_level	cipcode	grad_cohort	grad_cohort_years	geo_level	geography	ind_level	industry	y1_p25_earnings	y1_p50_earnings	y1_p75_earnings	y1_grads_earn	y5_p25_earnings
38	I	105100	5	A	0	0	3	N	0	A	0	26090	38055	52484	49788	40121
38	I	105100	7	A	0	0	5	N	0	A	0	38352	51299	66174	14221	48341
38	I	105100	17	A	0	0	5	N	0	A	0	52736	70206	92829	2241	65081
38	I	105100	18	A	0	0	5	N	0	A	0	46746	72825	108597	2092	67070
38	I	105200	2	A	0	0	5	N	0	A	0	25271	36261	47545	307	36290
38	I	105200	5	A	0	0	3	N	0	A	0	26211	38676	51551	13172	38529
38	I	105200	7	A	0	0	5	N	0	A	0	47567	64851	89253	7346	58810
38	I	105200	17	A	0	0	5	N	0	A	0	40173	53209	79280	657	59755
38	I	105200	18	A	0	0	5	N	0	A	0	52972	65049	98051	1454	75754
38	I	105500	1	A	0	0	5	N	0	A	0					
38	I	105500	5	A	0	0	3	N	0	A	0	31127	44613	60142	9095	43949
38	I	105500	7	A	0	0	5	N	0	A	0	52527	71630	93903	2471	70764
38	I	105500	17	A	0	0	5	N	0	A	0	56383	81244	116257	188	75703
38	I	105500	18	A	0	0	5	N	0	A	0	81601	106015	124370	65	83837
38	I	108100	5	A	0	0	3	N	0	A	0	27955	39566	54414	119068	41246
38	I	108100	7	A	0	0	5	N	0	A	0	42231	57956	85902	21782	54321
38	I	108100	17	A	0	0	5	N	0	A	0	51509	71994	103726	3064	68372
38	I	108100	18	A	0	0	5	N	0	A	0	47418	65470	87758	971	72543
38	I	108200	1	A	0	0	5	N	0	A	0	26147	37607	50089	1904	38859
38	I	108200	2	A	0	0	5	N	0	A	0	25195	32728	41654	300	37057

PSEO POSSIBLE FUTURE ENHANCEMENTS

- Addition of grads who are self-employed (working on now)
- Employment sector detail (company names)
- Geographic detail (employment state)
- Race/ethnicity and gender breakouts

PSEO DATA “IN THE WILD”

University of Texas System – SeekUT
<https://seekut.utsystem.edu/>

University of Alabama System - Employment and Earnings
<https://uasystem.edu/impact/employment-earnings>

Penn State System - We Earn
<https://weearn.psu.edu/national-earnings/>

University of Wisconsin-Madison
<https://data.wisc.edu/graduate-outcomes/> (no longer publicly available)
-CIP Area of Study to Major crosswalk

THANK YOU!

- Hopefully we uncovered some nuggets of outcomes-data wisdom you can take back to your institution



- Feel free to reach out with any questions
 - Chris Lehman – calehman@uillinois.edu